

# PRODUCT CATALOG

[www.uttpl.com](http://www.uttpl.com)

# ABOUT US

## Overview

Established in 2007, Ultratech Texture Paints Pvt. Ltd. (UTTPL) is a pioneer in manufacturing high-quality textured wall finishes and decorative emulsion paints. With a robust commitment to innovation and excellence, UTTPL caters to a wide array of applications, meeting the demands of both domestic and international markets. Over the years, we have earned a reputation as a trusted name in the paint and coatings industry, offering solutions that combine artistry, durability, and sustainability.

## Expanding Horizons

UTTPL has achieved significant milestones, expanding its operations pan-India and globally. Our collaboration with leading international brands like MAS Paints and Suzuka has enriched our portfolio, equipping us with state-of-the-art wall finishing tools and materials. This synergy allows us to deliver trend-setting textures and special effect paints that adhere to international quality standards, offering unparalleled options for interior and exterior walls.

## Special Effects Paints

Our special effect paints are designed to create eye-catching textures and finishes. These products come in a variety of variants, offering architects and designers limitless possibilities to bring their creative visions to life. From elegant interior textures to robust exterior wall finishes, UTTPL ensures that every product meets the highest standards of quality and aesthetic appeal.

## Innovation and Commitment

At UTTPL, innovation drives our mission to provide world-class wall finishes. We continually strive to introduce new textures and effects that align with global design trends and customer preferences. By understanding the evolving needs of architects, builders, and homeowners, we aim to set benchmarks in the industry through superior products and exceptional service standards.

# Why Choose UTTPPL

- **Quality and Expertise:** Every product undergoes rigorous quality checks to ensure it meets international benchmarks.
- **Sustainability:** We are committed to offering low-VOC, eco-friendly products that are safe for the environment.
- **Versatility:** Our extensive range of textures and finishes suits diverse applications, from residential projects to large commercial spaces.
- **Global Collaboration:** Partnerships with MAS Paints and Suzuka enable us to offer cutting-edge solutions backed by global expertise.
- **Customer Focus:** UTTPPL prioritizes customer satisfaction by delivering innovative solutions tailored to their needs.

---

---

## OUR VISION

To redefine walls with exceptional textures and special effects that inspire creativity, enhance spaces, and leave a lasting impression.

## OUR MISSION

To be the leading provider of innovative and sustainable wall texture and paint solutions, exceeding customer expectations and setting new industry standards.



---

## NON PIGMENTED RANGE

**Ultra Marmoplast Stone-** A combination of natural stone crushed powder added with sand and quartz aggregates to give a perfect natural stone like finish.

**Ultra Naturale-** A combination of natural stone crushed powder added with sand and ceramic aggregates to give a sand blasted stone look.

**Perlato Fine<sup>TM</sup> Natural-** Stone crushed powder with quartz and silica aggregates to derive a natural stone look finish.

**Ultra Marmoplast Stone (Special)-** A combination of natural stone crushed powder added with sand and granite aggregates to give a perfect natural stone like finish.

“Color is a power which directly influences the soul.”

..... Wassily Kandinsky



# NON PIGMENTED RANGE



**ULTRA  
MARMOPLAST DIAGNOL**



**ULTRA NATURALE**

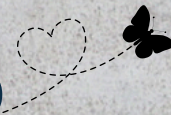


**PERLATO FINE<sup>®</sup>  
NATURAL**



**ULTRA MARMOPLAST STONE  
SPECIAL**

# NON PIGMENTED RANGE



**Perlato Fine<sup>TM</sup>(Trowel)**- It's a spray/trowel applied rough cast durable texture finish.

**Marmoplast**- It's a quartz and marble sand based durable texture finish giving a pitted travertine stone like feel.

**Ultratex Matt**- It's a pigmented reinforced quartz/sand based fine texture in matt finish.

**Duracoat-Spray Top Coated With Ultracoat Advance**-It's a pigmented spray finish in bubble look. Top coating with Ultracoat advance that makes it smooth, matt and durable finish in different shades.

**Duracoat-Spray Top Coated With Ultrashield**- It's a durable satin compact finish. It is top coated with Ultrashield making it smooth & highly washable with mild sheen.

**Duracoat-Roller Top Coated With Ultrashield**- It's a pigmented roller finish in orange peel look. Top coating with Ultrashield makes it smooth, satin and durable in a number of shades.

**Durafine**- It's a matt roller finish in orange peel soft look. Quartz powder and inorganic pigments provide high durability.

**Ultrafirenze**- It's a marble sand and quartz aggregates based textured finish when applied by trowel, gives randomly grooved durable finish.

**Firenze Coarse Fine<sup>TM</sup> Top Coated With U/Shield**- A pigmented textured finish with marble, sand and quartz aggregates in rustic look. Quartz aggregates make the texture random, vertical and diagonal. This can be top coated with UTTPL emulsion.

**Ultraspray**- It's a pigmented spray wall finish with marble and quartz aggregates.

**Granilato**- It's an elegant spray finish with myriad quartz grains of different size.

**Prelato Fine<sup>TM</sup> Spray** - It's a spray applied rough cast durable texture finish.



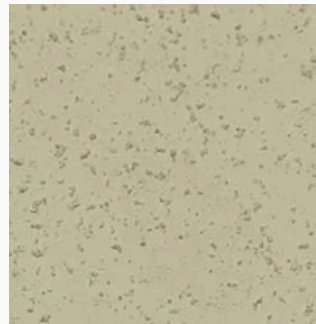
# PIGMENTED RANGE



**PERLATO FINE (TROWEL)**



**MARMOPLAST**



**ULTRATEX MATT**



**DURACOAT-SPRAY COATED  
WITH ULTRACOAT-ADVANCE**



**DURACOAT-SPRAY TOP COATED  
WITH ULTRASHIELD**



**DURACOAT-ROLLER COATED  
WITH ULTRASHIELD**



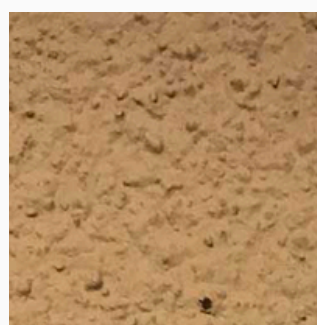
**DURAFINE**



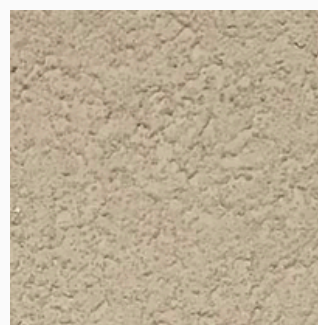
**ULTRAFIRENZE**



**FIRENZE COARSE FINE<sup>®</sup>**



**GRANILATO**



**PERLATO FINE (SPRAY)**



**ULTRASPRAY**



**MAS**  
PAINTS





# MARMORINO

Developed from mineral lime, marble dust, natural pigment plus additives and modernized to suit today's design without losing the quality of the traditional product.

## MAJOR USES

- Suitable for classical as well as for modern style decoration.
- The product is given a high level of breathability, prevents mildew and fungi growth and environment friendly.
- Suitable for decorating new concrete surfaces, renovation and restoration of old historical buildings, churches, palaces, hotels and villas.
- Used in interior and exterior.
- Can be applied to walls, ceilings, columns, and other curved surfaces, leaving a joint free finish. Lightweight surface.



# DAMASCO

**MAS DAMASCO** is a decorative covering for interior walls based on a special natural raw material giving an antique look, achieving this original DAMASCO effect, which is especially suitable for classical as well as for modern style decoration. The product is given a high level of breathability, prevents mildew and fungi growth and environment friendly.



# ALBA

**Alba** is a special pearlescent pigment for internal application.



**Water Based**



**Easy Application**



**Non Toxic**



**Can be Tinted Easily**



**Washable**



# SETA

**MAS SETA** is decorative trowel coating with dramatic metallic effect. It provides silky polychromatic finish that enhances the beauty of indoor surfaces.

## ADVANTAGES

➤ **High level of breathability**

➤ **UV resistant**

➤ **Prevents mildew growth**

➤ **Environment friendly**

➤ **Prevents fungi growth**



# TILAL

**MAS TILAL** is a water-based decorative for interior and exterior paints that renders professional results with simple application convenience.

## ADVANTAGES

- **Water Based**
- **Natural Mineral-blend**
- **Trowelling is all that required**
- **Simple Effortless**
- **Environment friendly**



# STUCCO GRASSELO

**MAS STUCCO GRASSELO** is a masonry covering for interiors, based on pure acrylic resins and selected fillers to provide a marble-like finish effect.

## ADVANTAGES

- **Water Soluble Material**
- **Natural Mineral-blend**
- **Odourless and Non Toxic**
- **Smooth Finish**
- **Environment friendly**
- **Pleasing appearance**



# MICROCEM



**Water Based**



**Eco Friendly**

## ADVANTAGES

- **Wide Range of Finishes and Colours**
- **Natural Mineral Material**
- **Good workability**
- **Unaffected by weather or freeze**
- **Contain low VOC**
- **Resistant to abrasion**
- **Pleasing appearance**
- **Good water vapour permeability**



# Microsoft

## Cyber Security Engagement Centre

## PALMYRA

**MAS PALMYRA** is a special coating for interiors with aesthetic EFFECT OF METAL TEXTURE. It is realized with new technologies which create a surface characterized by a unique feel that gives a new decorative solution to make your environment an ambience of sophistication and elegance.

## ADVANTAGES

- For Interior Use Only
- Good Adhesion Properties.
- Ease of Application.
- Environment Friendly





**MAS MAYA** *for Interiors*

# SUZUKA<sup>®</sup> TEXTURE COATING



## MAGIC GRANITE

- Rougher surface
- With mineral flakes, it brings minor reflective effects, to create extraordinary looks.



## STONY COAT

- Rough surface
- With natural stone, to create natural stone look effect.



## CERAMIC COAT

- Sandy surface
- Create fine and simple looks.



## CERAMIC COAT: FINE SAND COATING

**Ceramic Coating:** An understated yet elegant finish ideal for large buildings. Suzuka's ceramic coatings offer high strength, high fracture toughness and require minimal maintenance.

**The blend of fine grandeur color sands forms a suave and refined texture, giving the walls an elegant and graceful outlook.**

➤ For Interior & Exterior Both

➤ Eco Friendly

**Conforms to LEED, U.S. Green Building Council Standards**



## MGM: GRANITE EFFECT COATING

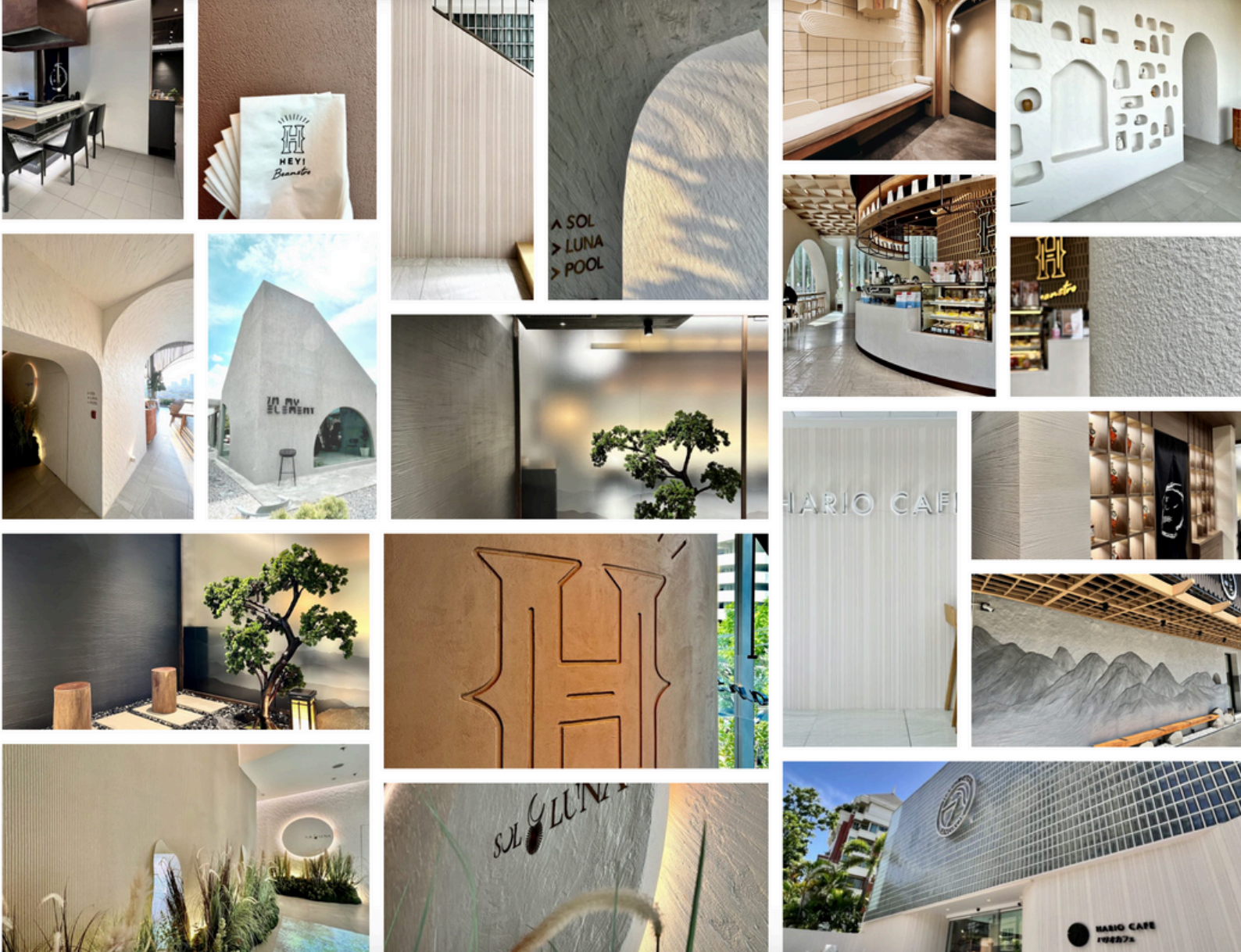
**Magic Granite:** Refined and timeless: two words to describe Suzuka's Magic Granite. This finish uses inorganic mineral flakes to create an exquisite granite look equally at home in private residences and commercial buildings. Its color can be customized to suit your design or to match existing granite.

**With the multi-tone combination of brilliant inorganic mineral flakes, a natural and coarse, yet exquisite granite look is created.**

➤ **For Interior & Exterior Both**

➤ **Eco Friendly**

**Conforms to LEED, U.S. Green Building Council Standards**



## MODENA COATING

**Suzuka® Modena Coating** is a decorative plaster product adopting ceramic color sands and high-tech resin providing seamless coating of a wide range of textures. Use different tools to create different styles from industrial, scandinavian to classic european.

### FEATURES

- For Interior & Exterior Both
- Excellent Alkaline Resistance to Prevent Efflorescence
- Extremely Good Penetration
- Excellent Adhesion
- Applicable with brush, roller or spray gun

**Conforms to LEED, U.S. Green Building Council Standards**



## MONOKRETE: EXTERIOR TEXTURED PAINT

Use **Monokrete** to transform the external space of the building with different shades of cement. The color and texture are monochrome, natural and bold, allowing you to create a dramatic statement!

- **For Interior & Exterior Both**
- **Easy application & DIY Friendly**
- **Easy To Touch Up & Maintenance**
- **Matt Finish**
- **Low VOC & odor**
- **Green Choice, Water Based & Eco Friendly**

**Conforms to LEED, U.S. Green Building Council Standards**



## **STRATO® CEMENT TEXTURE PAINT**

Create everlasting look with **Strato® Cement Texture**. Whether you are going for the industrial, scandinavian, contemporary or minimalistic style, the backdrop of the cement texture can complete the look.

- **For Interior Use Only**
- **Easy application & DIY Friendly**
- **Easy To Touch Up & Maintenance**
- **Low VOC & odor**
- **Matt Finish & Crack Resistant**
- **Green Choice, Water Based & Eco Friendly**

**Conforms to LEED, U.S. Green Building Council Standards**



## **STONY COAT: STONE EFFECT**

Using a combination of color sands, **Suzuka Stony Coat** crafts the authentic effects of natural stones. Its granular surface gives the wall a bold and prominent finish. Its colors can be customized to suit your design and decor.

- **For Interior & Exterior Both**
- **Natural Stone Look effect**
- **Easy To Touch Up & Maintenance**

- **Rough Surface**
- **Matt Finish & Crack Resistant**
- **Green Choice, Water Based & Eco Friendly**

**Conforms to LEED, U.S. Green Building Council Standards**

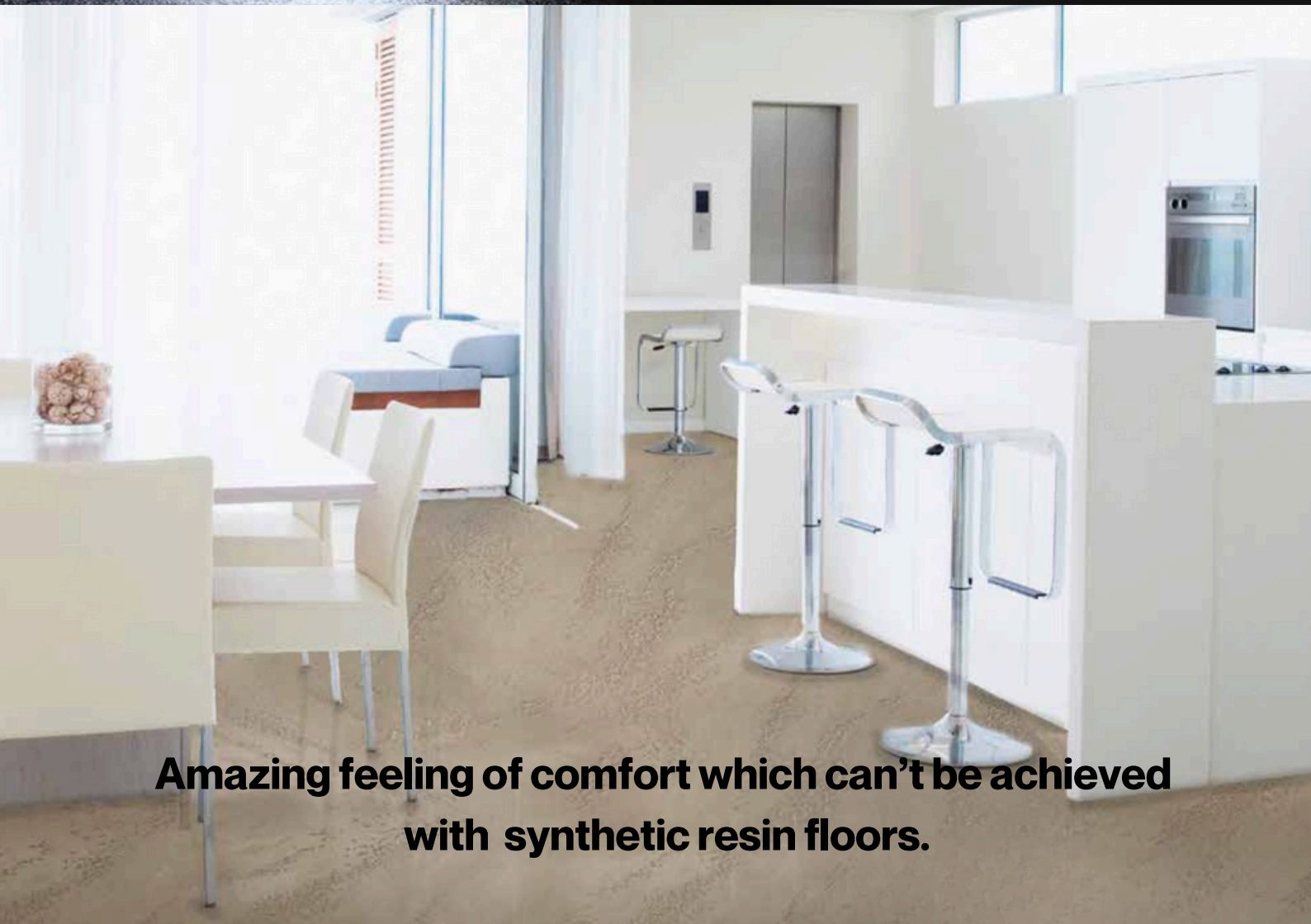


A modern interior space with a polished concrete floor. In the foreground, two large glass vessels, one yellowish and one dark green, sit on a light-colored fur rug. In the background, a white speaker system is visible against a concrete wall. A window or glass door is on the left side of the frame.

**MICROMARMO**  
FLOOR & ULTRA



**100 % Eco Friendly, Mineral Finish, with natural source components and marble inerts.**



**Amazing feeling of comfort which can't be achieved with synthetic resin floors.**

MICROMARMO® *Floor...*  
Spatolato Effect

MicroMarmo 2500  
Matt Protector 2K

MICROMARMO® *Floor...*  
Spatolato Effect

**Thickness (2-3 mm) for strong mechanical  
resistance and scratch**

**Corporate Office**

**421, DLF Star Tower, Sector 30, Gurugram, Haryana - 122022**

**Sales Office**

**Plot No-14A, Harpton Complex, Udyog Vihar,  
Gurugram Sector-18, Haryana-122015**

**Works**

**Plot No-G119, Ind. Area II, Neemrana Alwar, Rajasthan-301705**

**Phone**

**0124-4233522 | 0124-4040604**



**info@uttpl.com**



**www.uttpl.com**